

Changing Face of America

Latest Immigration Data

Denzil Mohammed

Director, Public Education Institute

The Immigrant Learning Center, Inc., Malden MA

dmohammed@ilctr.org

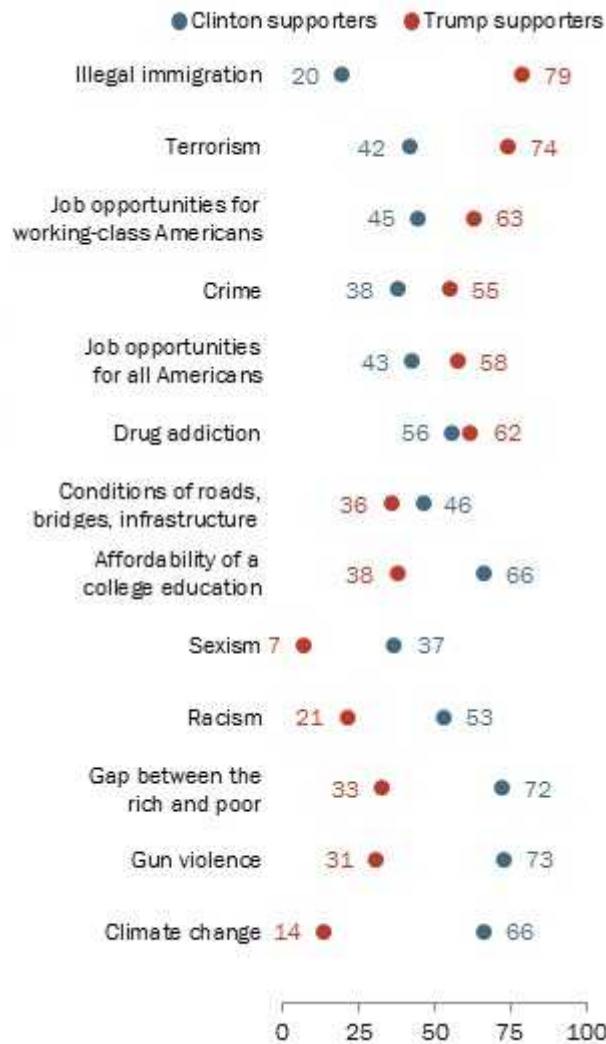
Webinar, *Numbers that Matter: Using Immigration Data to Advance Change*, December 2016



Views on Immigration

Clinton, Trump voters sharply diverged on seriousness of an array of problems

% of voters who said each is a 'very big problem' in the country today ...



Source: Pew Research Center, "A Divided and Pessimistic Electorate," 2016



Views on Immigration

most important issue facing the country			
	clinton	trump	other/no answer
foreign policy 13%	60%	33%	7%
immigration 13%	33%	64%	3%
economy 52%	52%	41%	7%
terrorism 18%	40%	57%	3%

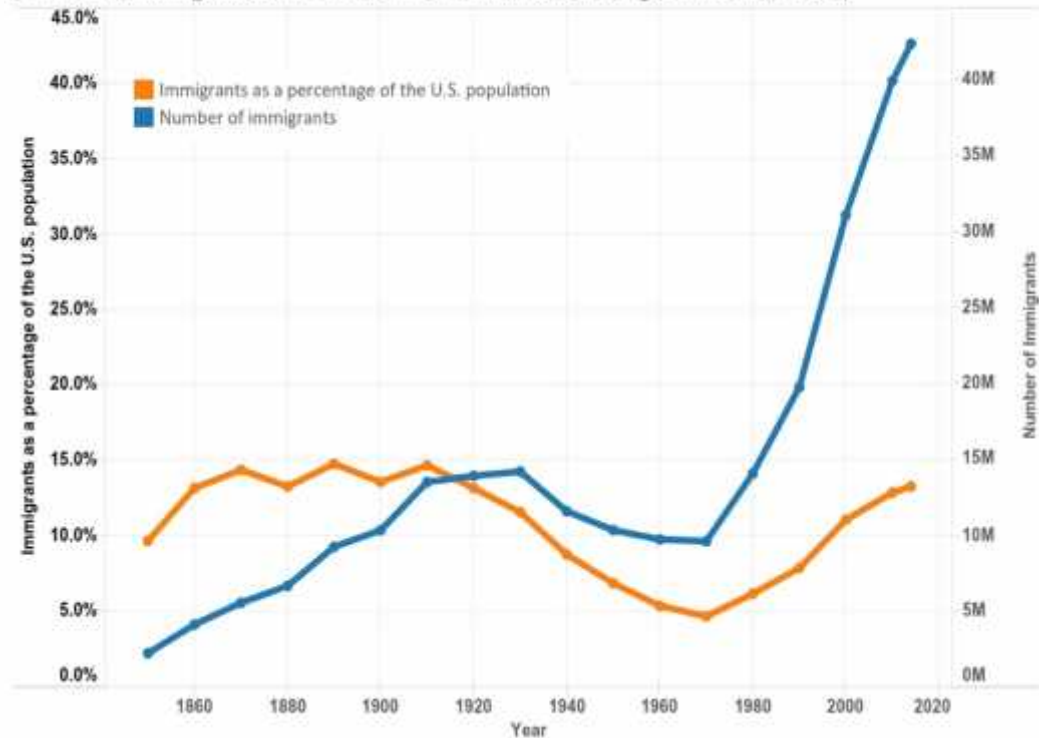
Share of Population

Not the highest immigrant share of population in U.S. history.

It peaked at 14.7% in 1910 then dropped to 4.7% in 1970.

13.3%, 42.4m total (2014)

Number of Immigrants and Their Share of the Total U.S. Population, 1850-2014



Source: Migration Policy Institute Data Hub

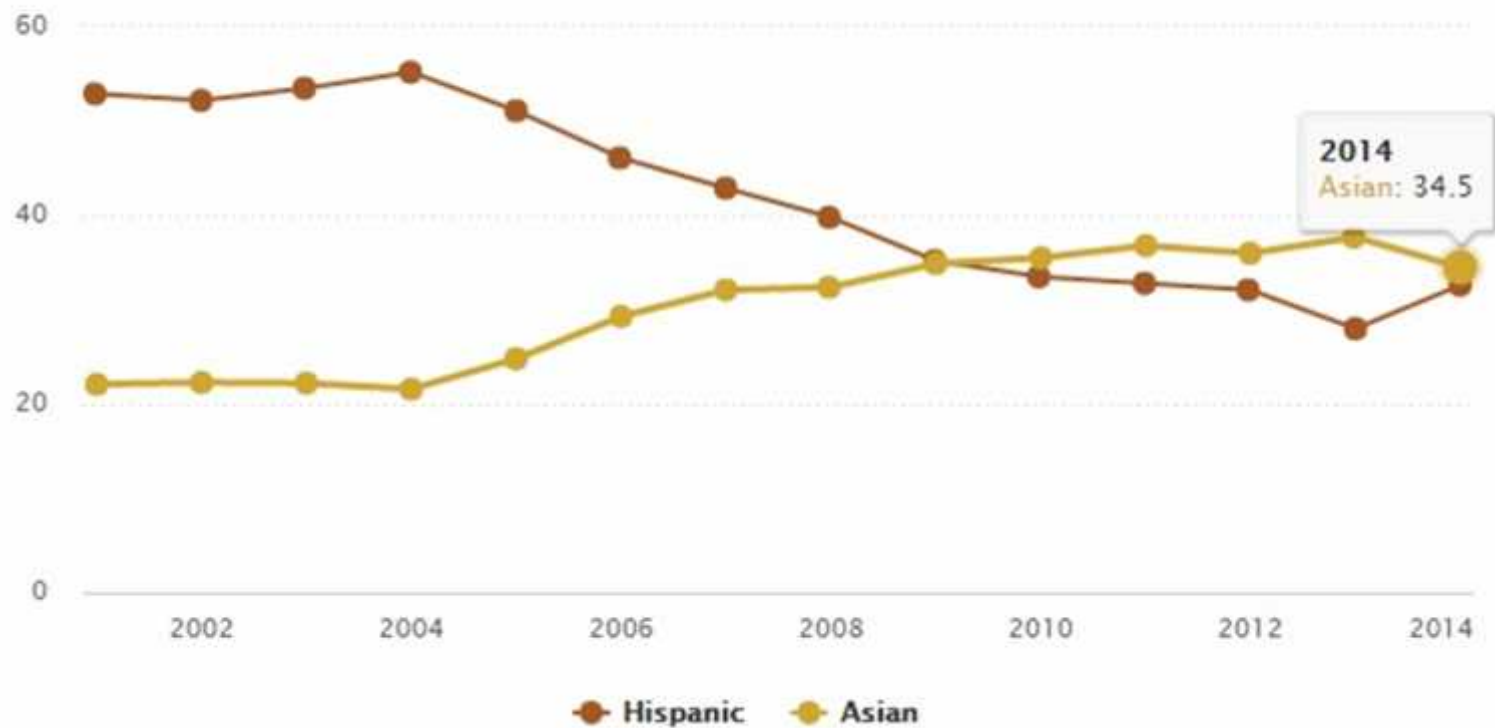
Number of Refugees



Source: Jie Zong and Jeanne Batalova, *Refugees and Asylees in the United States*, Migration Policy Institute, 2015

Ethnicity

Share of immigrants arriving to the U.S. in each year who are ...

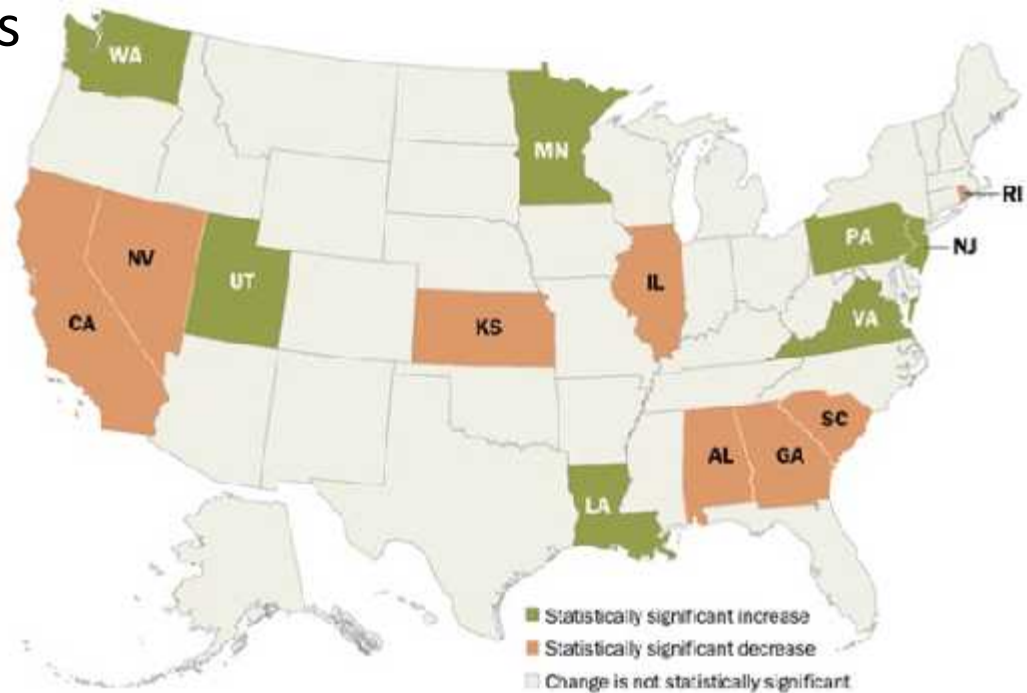


Number of Undocumented

Mexican departures have exceeded arrivals

More states seeing drops in unauthorized workers (see map)

Two-thirds are long-term residents (10 years+)



Source: Pew Research Center, "Size of U.S. Unauthorized Immigrant Workforce Stable After the Great Recession," 2016

Undocumented Pay Taxes

- Immigrants pay up to \$140 billion annually in federal, state, local taxes
- Undocumented immigrants use ITINs to pay an estimated \$11.6 billion per year (2015)
- Effective rate of 8%, less than other taxed groups

Massachusetts: \$201m

California: \$3.17b

Kentucky: \$37.4m

Pennsylvania: \$139m

Texas: \$1.54b

New York: \$1.1b

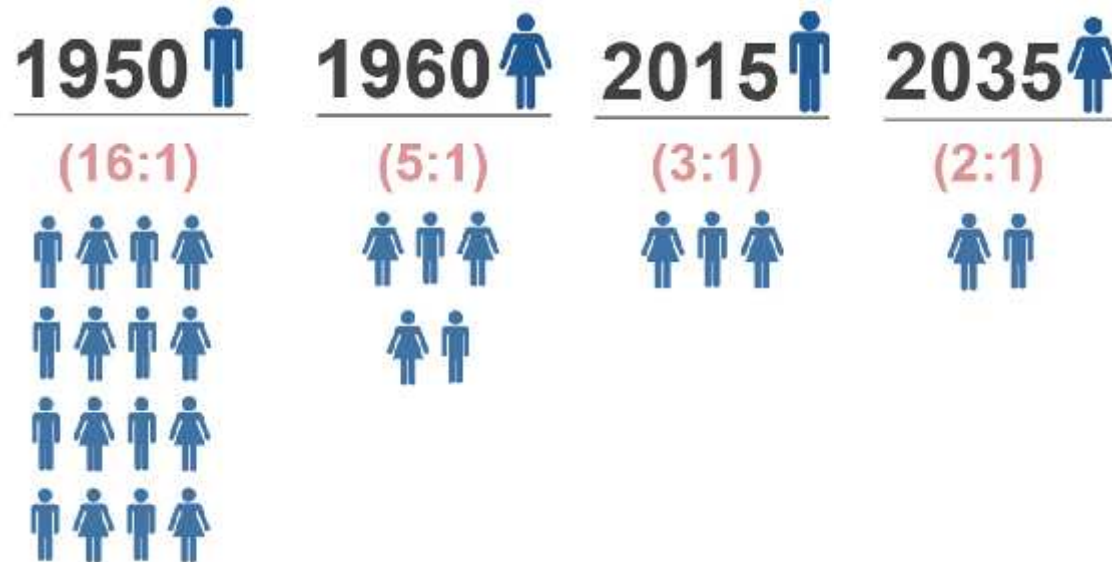
Washington, DC: \$27.1m

Maryland: \$308m



Sources: Smith and Edmonston, 1997; Institute for Taxation and Economic Policy, *Undocumented Immigrants' State and Local Tax Contributions*, 2016

Immigrants Support Social Systems

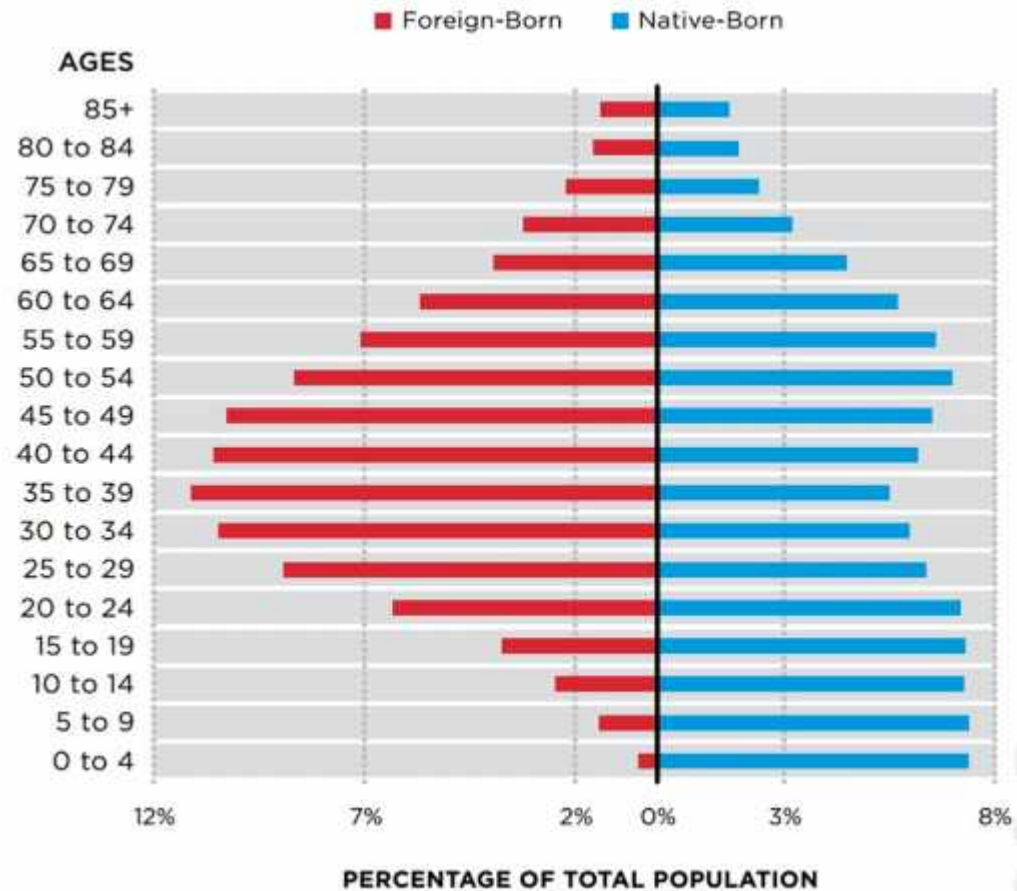


- Number of seniors will double by 2050
- Ratio of seniors to workers will soar by <70% by 2040
- Immigrants are subsidizing Medicare's core trust fund
- More workers needed, especially in healthcare

Immigrants Are of Working Age

Immigrants make up 16.7% of the labor force, more than share of population (2015).

More than 70% of immigrants are between 25 and 54 compared to 50% of natives.



Sources: Migration Policy Institute, Age-Sex Pyramids of U.S. Immigrant and Native-Born Populations, 1970-Present, 2015; *America's Advantage: A Handbook on Immigration and Economic Growth*, 2015; Bureau of Labor Statistics, "Labor Force Characteristics of Foreign-born Workers Summary," 2016.

Immigrants Work

Immigrants are **13%** of the U.S. population but:

28%

physicians/surgeons

22%

nursing, psychiatric
and home health aides

15%

nurses

40%

medical scientists in
manufacturing R&D

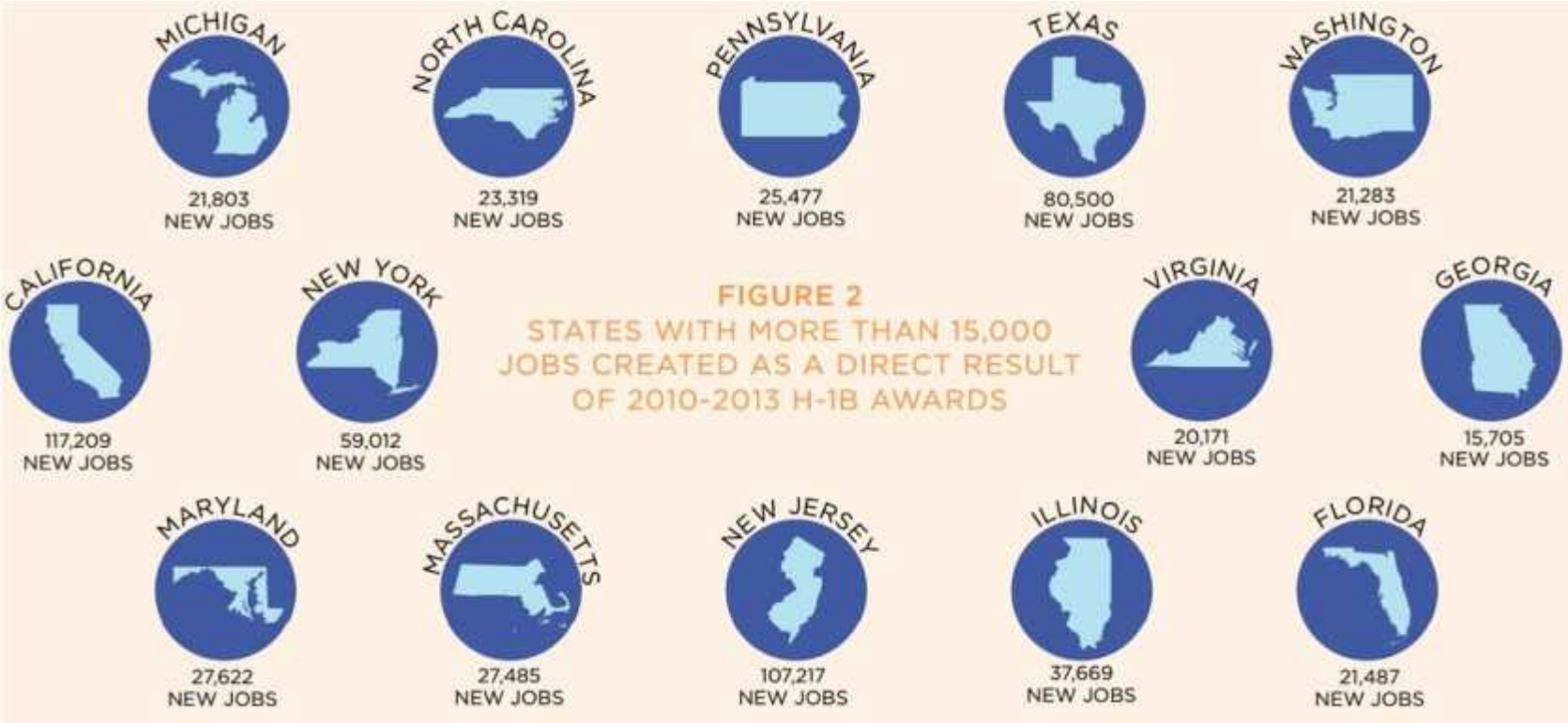
50+%

biotechnology
workers



Source: The Immigrant Learning Center, Inc. and the Institute for Immigration Research at George Mason University, *Immigrants in Health Care: Keeping Americans Healthy Through Care and Innovation*, 2016; Renew Our Economy: America's Aging Crisis: How Immigration Reform Can Strengthen the U.S. Health Care System, 2015

Immigrants Create Jobs



Immigrants Create Jobs





Views on Immigrants

Most Trump backers say undocumented immigrants should be allowed to stay, if they meet requirements

% of registered voters who say undocumented immigrants in the U.S. who meet certain requirements ...

	Should be allowed to stay legally %	Should <u>not</u> be allowed to stay legally %	And should there be effort to deport ...		
			Yes %	No %	DK %
All voters	80	18	14	4	2=100
Clinton supporters	95	4	1	3	1=100
Trump supporters	60	37	32	5	3=100

Thank You



Download free ILC Public Education Institute reports at www.ilctr.org/promoting-immigrants



Immigration Research
and Information

For all your immigration research and data,
go to www.immigrationresearch-info.org



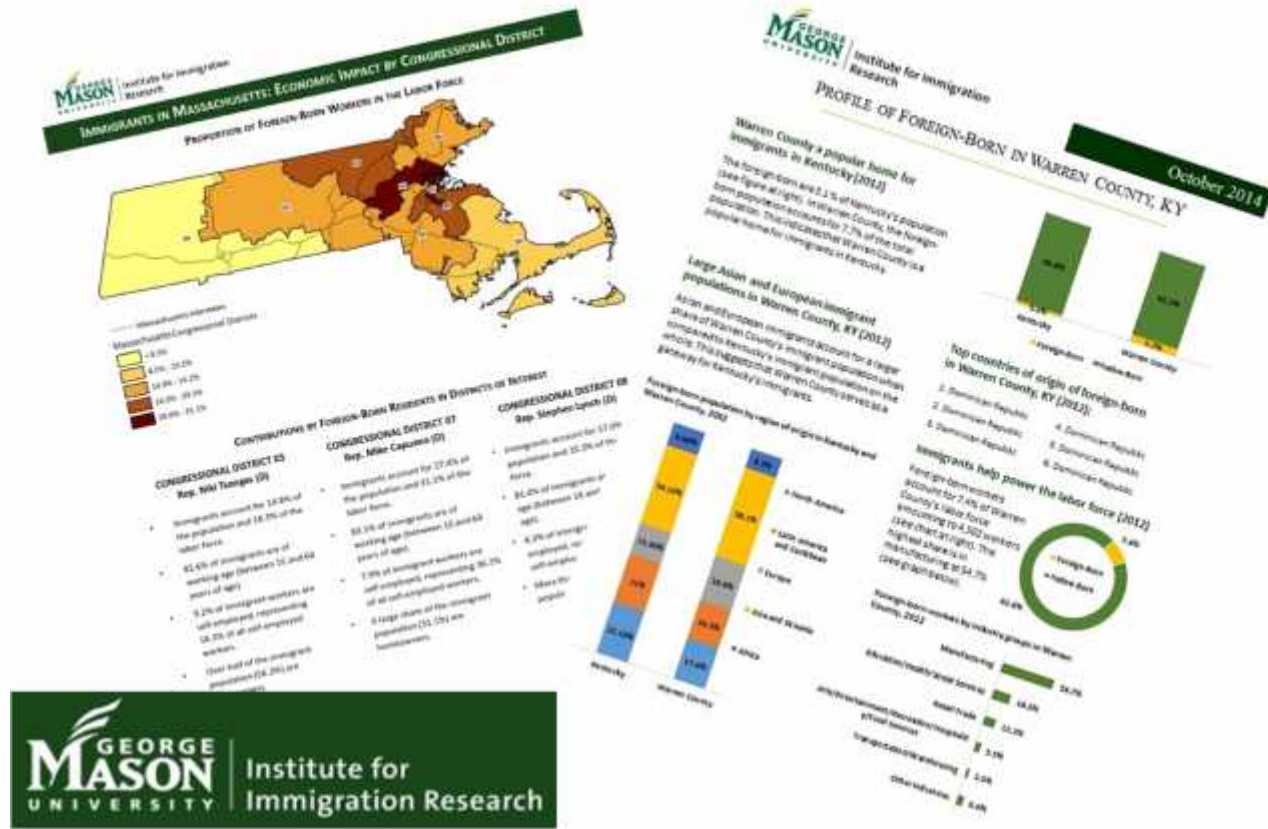
Visit the Institute for Immigration Research at GMU:
<http://iir.gmu.edu/>

Denzil Mohammed
dmohammed@ilctr.org

Numbers that Matter: Using Immigration Data to Advance Change, Dec.2016



Immigration Data on Demand



Institute for Immigration Research at GMU:
<http://iir.gmu.edu/idod>

