



Immigrants in the U.S.

Statistical Overview of Demographics, Education and Labor

Denzil Mohammed

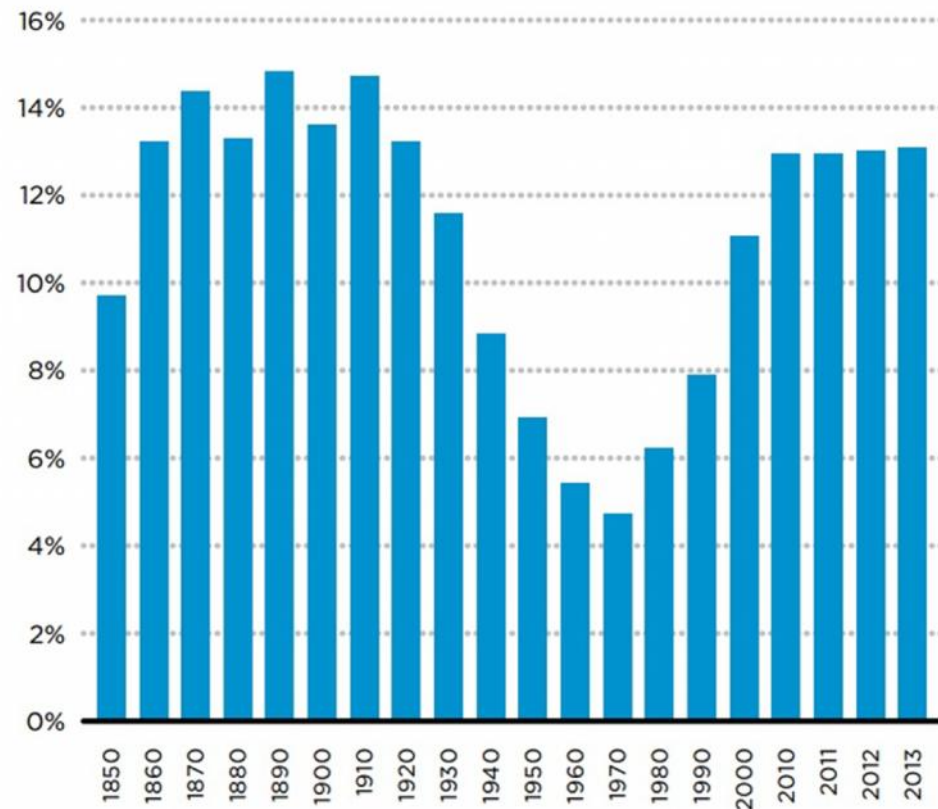
Director, Public Education Institute
The Immigrant Learning Center, Inc.
Malden, MA



13.1% of total population

This is not the highest immigrant share of population in U.S. history.

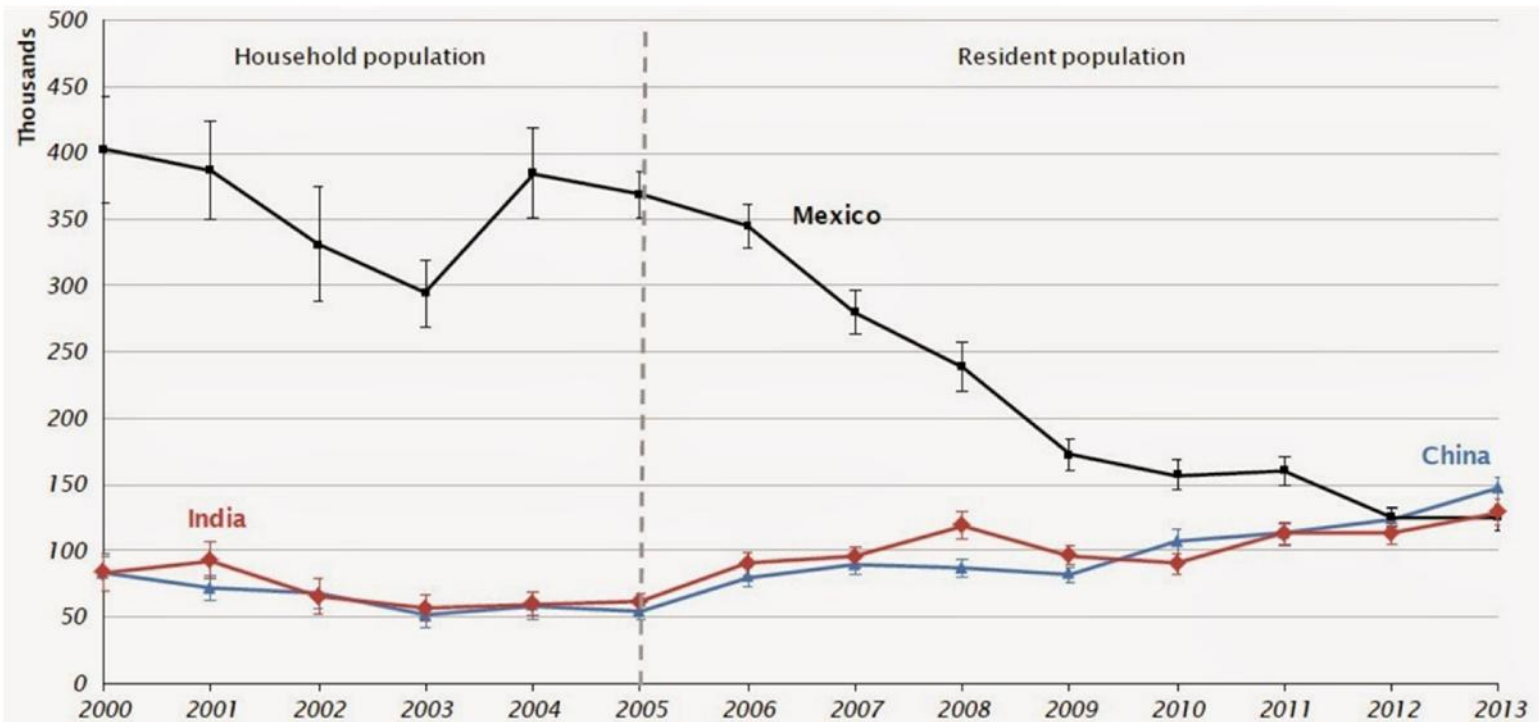
It peaked at 14.7% in 1910 then dropped to 4.7% in 1970.



Source: U.S. Census Bureau 2011, American Community Survey 2011



Place of nativity



Note: The ACS did not include the group quarters population until 2006. The time series from 2000 to 2005 reports the household population while the time series from 2006 to 2013 reports the resident population.

Margin of error at the 90% confidence level shown.

Source: U.S. Census Bureau, Population Division, 2000 to 2013 Single-Year American Community Surveys.

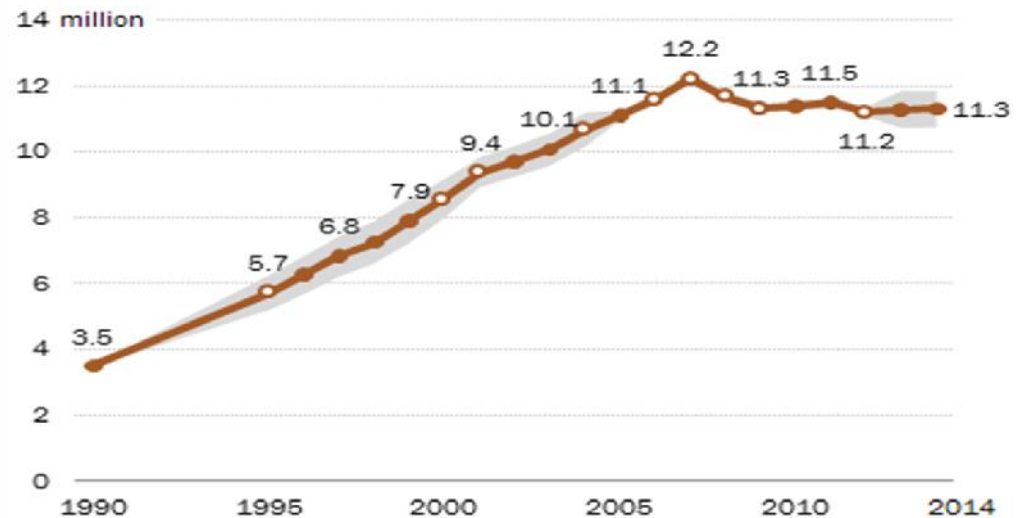
Unauthorized immigration

Immigrant population increased by 30% since 2000; unauthorized immigration has slowed, declined and bottomed out:

- From a peak of 12.2m (2007) to 11.3m (2014).

Estimates of U.S. Unauthorized Immigrant Population, 1990-2014
(in millions)

U.S. Unauthorized Immigrant Population Levels Off



Fastest-growing states for immigrants



TN, SC, KY, AL and MS have seen the fastest growth in immigrant population.

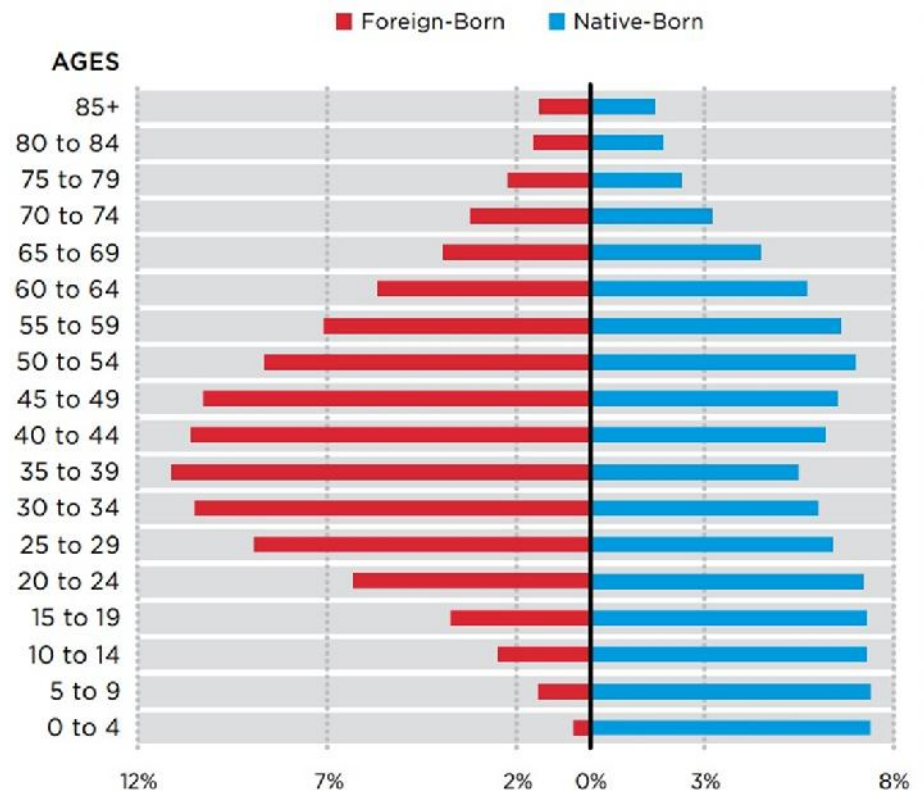
Source: Pew Hispanic Trend Project, *Statistical Portrait of the Foreign-Born Population in the United States, 2011*

Outsized role in labor force

- Immigrants make up 16.5% of the labor force, more than their share of population.
- More than 70% of immigrants are between 25 and 64 compared to 50% of natives.



Percentage of the Population in Each Age Distribution, 2010, Foreign-Born and Native-Born



Sources: *America's Advantage: A Handbook on Immigration and Economic Growth*, 2015; Pew Research Center, "Statistical Portrait of the Foreign-Born Population in the United States, 2010." Bureau of Labor Statistics, "Labor Force Characteristics of Foreign-born Workers Summary," 2015.



Outsized role in labor force

- **STEM:** An additional 262 jobs for the native-born are created for every 100 foreign-born STEM workers with advanced degrees from U.S. colleges.
- **Texas:** new H-1B visas will translate into 80,500 new jobs for U.S.-born workers in the state by 2020
- **California:** new H-1B visas will translate into 117,209 new jobs for U.S.-born workers in the state by 2020

Source: American Enterprise Institute and the Partnership For A New American Economy, *Immigration and American Jobs*, 2011



Workers and Social Security

16 ¹⁹⁵⁰ Workers



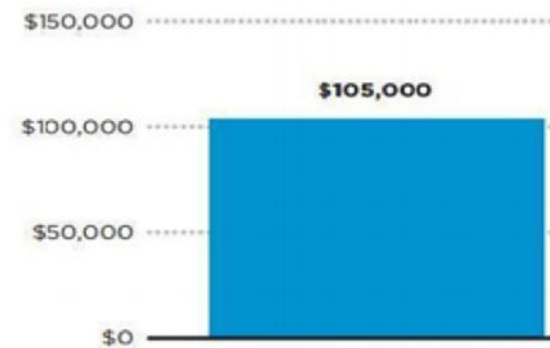
3 ²⁰¹⁰ Workers



Educational attainment

- Recent immigrants more likely than natives to have a bachelor's or advanced degree
- College attainment among immigrants increased 50% to 39%, 2000-11.
- With more education, immigrants become a net benefit to government budgets.

Average Fiscal Impact of the Foreign-Born with Greater than High School Education

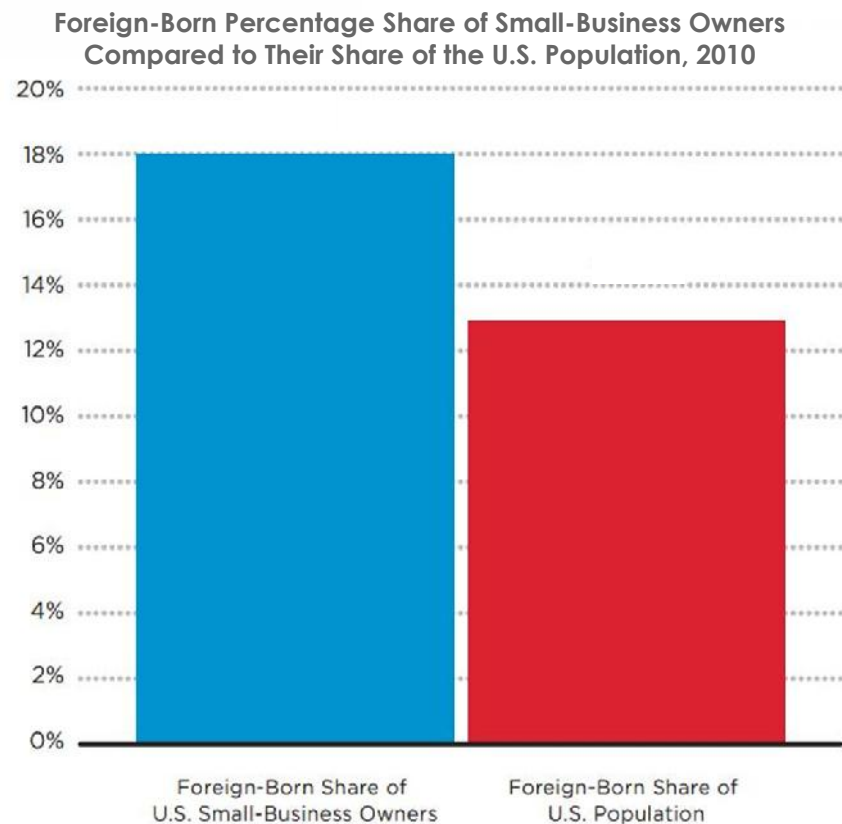


Source: Smith and Edmonston, 1997; Pew Research Center, "Today's newly arrived immigrants are the best-educated ever," 2015

Immigrant entrepreneurship

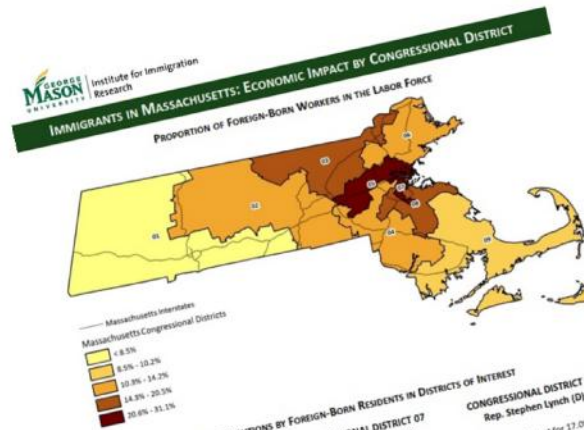
Immigrants more likely than native-born to be self-employed. In 2010, immigrants owned 18% of all small businesses.

- Share of pop.: 13.1%
- Share of labor force: 15.9%



Source: David Dyssegaard Kallick, *Immigrant Small Business Owners: A Significant and Growing Part of the Economy*, 2012

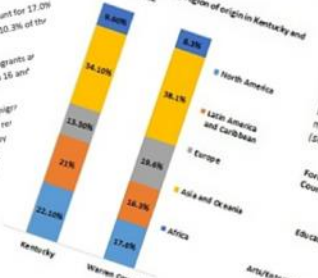
Immigration Data on Demand



- CONGRESSIONAL DISTRICT 03**
Rep. Niki Tsongas (D)
- Immigrants account for 18.8% of the population and 18.3% of the labor force.
 - 82.6% of immigrants are of working age (between 16 and 64 years of age).
 - 9.2% of immigrant workers are self-employed, representing 18.3% of all self-employed workers.
 - Over half of the immigrant population (56.2%) are homeowners.
- CONGRESSIONAL DISTRICT 07**
Rep. Mike Capuano (D)
- Immigrants account for 27.4% of the population and 31.1% of the labor force.
 - 83.1% of immigrants are of working age (between 16 and 64 years of age).
 - 7.3% of immigrant workers are self-employed, representing 36.2% of all self-employed workers.
 - A large share of the immigrant population (31.1%) are homeowners.
- CONGRESSIONAL DISTRICT 08**
Rep. Stephen Lynch (D)
- Immigrants account for 17.0% of the population and 10.3% of the labor force.
 - 81.4% of immigrants are of working age (between 16 and 64 years of age).
 - 8.3% of immigrant workers are self-employed, representing 17.0% of all self-employed workers.
 - More than 50% of the immigrant population are homeowners.



- Large Asian and European immigrant populations in Warren County, KY (2012)**
- Asian and European immigrants account for a larger share of Warren County's immigrant population when compared to Kentucky's immigrant population on the whole. This suggests that Warren County serves as a gateway for Kentucky's immigrants.



- Top countries of origin of foreign-born in Warren County, KY (2012):**
- Dominican Republic
 - Dominican Republic
 - Dominican Republic
 - Dominican Republic
 - Dominican Republic
 - Dominican Republic

Immigrants help power the labor force (2012)

Foreign-born workers account for 7.4% of Warren County's labor force amounting to 4,502 workers (see chart at right). The highest share is in manufacturing at 54.7% (see graph below).



Institute for Immigration Research at GMU:
www.iir.gmu.edu



Immigrants in Health Care

Thank you

Webinars and Online Workshops

Immigrant Entrepreneur Hall of Fame and Video Interviews

Immigrant Entrepreneur of the Year Awards

Research Reports

www.ilctr.org/promoting-immigrants/

Immigration Research and Information:

www.immigrationresearch-info.org

Visit the Institute for
Immigration Research
at GMU: www.iir.gmu.edu

